

# Kewaunee County Garden Club Newsletter

[www.kcgardenclub.org](http://www.kcgardenclub.org)

## The 'Hitchhiker'—Spotted Lanternfly

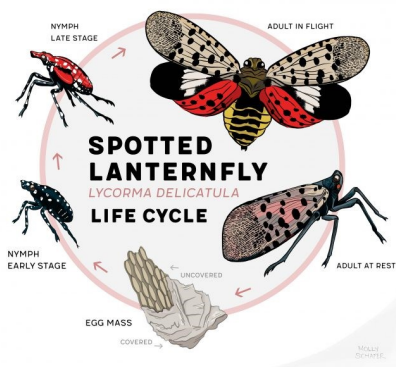
Another pest surfaces!. Every year it seems as though there is one more insect to attack our yards. This year is no exception. It is the Spotted Lanternfly. This invasive pest has been identified in southeastern Wisconsin. This pest has a very healthy appetite feeding on a wide range of fruit, ornamental and woody trees, piercing the plant stems and tree bark, depleting the plant's energy reserves and costing hundreds of millions of dollars annually in lost agriculture.

They are hard to spot and harder to destroy. They are often mistaken for ticks (*as babies*) or moths (*as adults*), the Spotted Lanternfly is neither. Instead, it is known as a 'hopper' and grows its wings only in the adult stage. Eggs are laid from September to mid-November; the insects hatch in early spring. Their coating is black, with white polka dots, and as they grow, they split along their back and crawl out into new life stage. In mid-summer, they turn red with white polka dots. By August, most have morphed into their winged adult stage. They have eyes on the sides of their heads and are quick to evade a fatal stomp. The best suggestion to killing them is spraying Neem oil which can help. The most effective solution (*so far*) requires systemic insecticides.

The spotted lanternfly causes serious damage in trees, including oozing sap, wilting, leaf curling, and tree dieback.

Spotted Lanternfly excrement, otherwise known as honeydew, contains high concentrations of sugar. Such cheap, easy energy inevitably attracts other insects, such as yellow jackets, hornets, and wasps.

So how did they get here from China? They are great hitchhikers. Boat? Air? Cars? The hide under the hood of a car, near windshield wipers, in the wheel wells of tires, nestled under bumpers—and they have been known to cling onto cars traveling at 50 miles per hour.



## Program and Events

**Tuesday, May 23**—'Beneficial Bugs' by Barb Piechocki Location TBD

**Saturday, May 27**—26th Annual Plant Sale on the lawn at Lakehaven Hall in Kewaunee  
9:00 a.m. to Noon

**Tuesday, June 13**—Dana Farm Cleanup at 2:00 p.m.

**Pollinator Week:** June 19—25

**Tuesday, July 25**—Tour of Shirley Nell's gardens (*tentative*)

### Other Possible Programs and Tour:

'Canning' with Mary Novak

'Foraging' with Barb Piechocki

**Tour:** New Children's Garden at the Green Bay Botanical Gardens

## WMBD 10th Anniversary Celebration

A big 'thank you' to Sue and Warren Hingst for providing colorful gourd birdhouses and plants for the event. Thanks to everyone who volunteered to greet and answer gardening questions at this years very well attended and enjoyable Bird City Algoma event.





# 26th Annual Plant Sale

**Lakehaven Hall, Kewaunee**

**Saturday, May 27, 2023**

**9:00 a.m.—Noon**

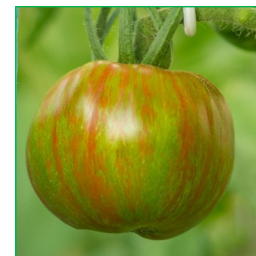
1. **Flowering and non-flowering plants** ... annuals, perennials; native plants for pollinators and beneficial insects, heirloom tomatoes, vines, succulents, and house plants.
2. **Gardening Kits** for kids and adults
3. **Garden Décor**

## **New at the Plant Sale this year ...**

1. **Companion Planting** Information and companion plants for insect protection, better flavor and yield. Brochures and charts will be available as well as garden club members to answer questions.
2. **Shovel and Hoe Sharpener:** Attendees can bring their garden tools to the event for sharpening. **Cost:** \$6.00/tool

## Plants Offered at Plant Sale *(so far)*

- Delphiniums
- Rockcress
- Shasta Daisy
- Penstemon
- Sea Thrift
- Dianthus
- Coneflower
- Heuchera
- Sedum
- Lavender
- Pink Turtlehead
- Juncus Grass
- Mums
- Campanula (*Bellflower*)
- Coreopsis
- Leopard's Bane
- Columbine
- Yucca
- Hydrangeas
- Ranunculus
- Mangave
- Hens and Chicks
- Bugleweed
- Windflower
- Agastache
- Ditch Lilies
- Catnip
- Catmint
- Scented Geranium
- Rosemary
- Prairie Blazing Star
- Basil
- Puerto Rican Oregano
- Italian Leaf Parsley
- Curly Leaf Parsley
- Alliums
- Hostas
- Nasturtiums
- French Marigolds
- Bleeding Hearts
- Black-Eyed Susan
- Lungwort
- Primroses
- Brunnera
- Solomon's Seal
- Ostrich Fern
- Lady's Mantle
- **Tomatoes**
  - Roma
  - Tie-Dye Green
  - Black Russian
  - Cherokee Purple
  - Mortgage Lifter
  - Aunt Rubys German Green
  - Grape



Tie-dye Green

## Container Gardening: “Jewelry of the Garden”

Containers allow one to change plants each year or with the seasons. They add personality to your entry or backyard. Some tips for that ‘perfect’ jewel of a container ...

1. **Selection of containers is critical.** Rather than have a grouping of small containers, it is better to choose a larger container and fill it with a mix of plants.
2. **Soil Selection is Critical:** If a bag of soil feels way too heavy, hard as a brick, and doesn’t loosen when it is dropped, look for something else.
3. **Design Techniques:** Allow the plants and shape of the container to dictate the design. Classic proportions of one-third container height to two-thirds plant height.  
**Basic guideline :** ‘Three heights, three textures, and three colors. This takes one beyond the ‘thriller, filler, and spiller concept’.
4. **Container Location:** Will container be in a sunny, shady, or a combination? Windy area? If in a windy area, place a rock at the bottom of the container and fill with potting soil.
5. **Watering:** Water gently and lightly, then walk away for 10 minutes, come back and water deeply. This breaks the surface tension of the soil and allows water to penetrate thoroughly.
6. **Feed Lightly:** Use a granular organic fertilizer and renew seasonally.
7. **Mulch:** Use wood chips to mulch the exposed soil.
8. **Soak Hanging Baskets:** Take down a hanging basket and submerge in a large bucket until bubbles stop forming and the weight is much heavier.
9. **Design for Flowers:** ‘If you begin your design based on a flower, you will almost always be disappointed. Base your design on foliage and texture first, then add flowers and you will never go wrong.’ -Christina Salwitz





# BLOOM TIMES

A GUIDE TO SPRING AND SUMMER BULBS

Spring and summer bulbs make it easy to fill your yard and garden with color from early spring through fall. By choosing bulbs that flower at different times during the growing season, you can always have something beautiful coming into bloom.



FLOWER NAME	SPRING			SUMMER			FALL	
	EARLY	MID	LATE	EARLY	MID	LATE	EARLY	MID
CROCUS	[Green bar]							
SNOWDROPS	[Green bar]							
CHIONODOXA	[Green bar]							
IRIS	[Green bar]							
RETICULATA	[Green bar]							
SCILLA	[Green bar]							
SIBERICA	[Green bar]							
DAFFODILS	[Green bar]							
HYACINTHS		[Green bar]						
MUSCARI		[Green bar]						
FRITILLARIA		[Green bar]						
TULIPS	[Green bar]							
ANEMONE	[Green bar]					[Green bar]		
RANUNCULUS	[Green bar]					[Green bar]		
LEUCOJUM		[Green bar]						
DUTCH IRIS			[Green bar]					
SPANISH			[Green bar]					
BLUEBELLS			[Green bar]					
ALLIUMS			[Green bar]					
IRIS			[Green bar]					
LILIES				[Green bar]				
CALADIUMS				[Green bar]				
TUBEROUS				[Green bar]				
BEGONIAS				[Green bar]				
CANNAS				[Green bar]				
LIATRIS					[Green bar]			
CROCOSMIA					[Green bar]			
CRINUM					[Green bar]			
DAHLIAS					[Green bar]			
CALLA LILIES					[Green bar]			
GLADIOLUS						[Green bar]		
ELEPHANT EARS						[Green bar]		

**NOTE:** These bloom times are averages for hardiness zone 5. Flowering may begin later in zone 4 and earlier in zones 6-8. Only some of these bulbs are suitable for zones 9-11 and bloom time will vary.

**President:** Tom Zenner

**Vice President:** Cheryl Eberle

**Secretary:** Sue Hepp

**Treasurer:** Ann Brunner

**Marketing Committee:**

Tom Zenner

Barb Smith

Cheryl Eberle

Nancy Lamack

Joel Weichelt

Mary Novak



[www.kcgardenclub.org](http://www.kcgardenclub.org)

## Pollinator Week—June 19-25th

Some  
Flowers for Pollinators

- Coneflowers
- Butterfly Bush
- Swamp Milkweed
- Oregano
- Columbine
- Blazing Star
- Lavender

- Zinnia
- Yarrow
- Stonecrop
- Cosmos
- Penstemon
- Rosemary
- Borage

- Sunflowers
- New England Aster
- Anise Hyssop
- Foxglove
- Cardinal Flower
- Phlox
- Monarda